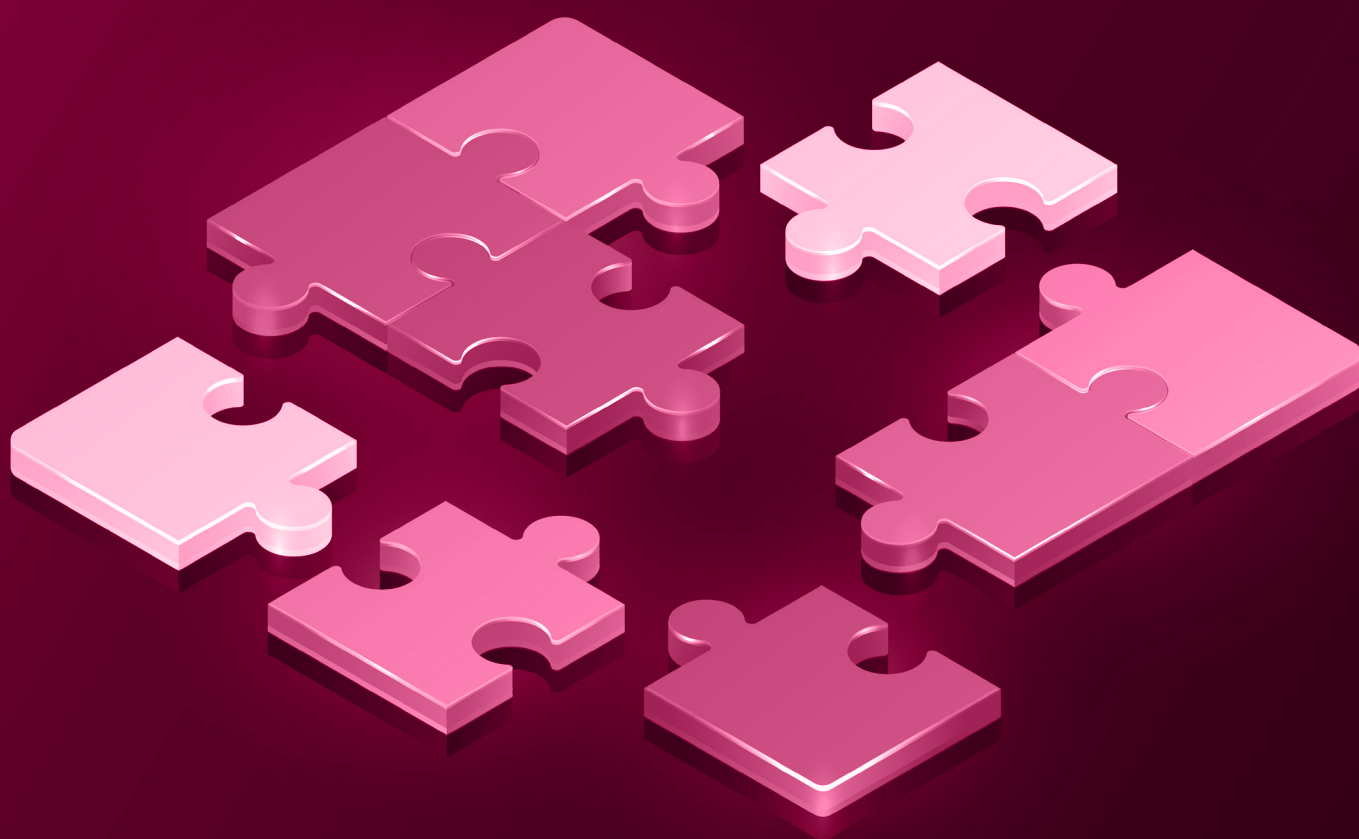




AFRICAN SCHOOL OF EVALUATION
EDITION 1

Mixed Methods in Action: Quantitative and Qualitative Essentials for Field Evaluators

Provided by ENAP



CONTEXT

In a setting where building evaluation capacity is a key driver for effective public governance that's adapted to local realities, the National School of Public Administration (ENAP) is honoured to take part in the first edition of the African School of Evaluation (ASE), which will be held from 24 to 28 November in Accra, Ghana. This ambitious initiative aims to train a new generation of evaluators capable of producing rigorous analyses rooted in African contexts, while meeting international standards and promoting the 'Made in Africa Evaluation' approach.

As a recognized leader in training and consulting services for the evaluation of public policies and programmes, ENAP draws on expertise developed over decades of working with governments and public institutions in Quebec and around the world. Our shared values with AfrEA make us a natural partner to contribute to the influence and credibility of EAE and ensure the success of this first edition.

ENAP'S APPROACH TO CONTINUING EDUCATION

ENAP's services are based on a balanced combination of theory and practice. They are founded on a comprehensive and integrated approach that aims to transfer expertise, develop know-how and share experience. The School promotes dialogue and advocates an approach tailored to the priorities of public administrations in the countries where it operates. To ensure optimal transfer of learning to practice, ENAP's approach is characterised by:

- * A dynamic, practice-oriented teaching method that encourages participant involvement;
- * Content that is rooted in the reality of participants to promote understanding and real-world application of the concepts, methods and tools presented within partner organisations.
- * Concrete exercises aimed at putting learning into practice;
- * Trainers with extensive experience in training public managers, both in Canada and internationally.

SPECIALISED EVALUATION MODULES (SEM)

Specialised evaluation modules are intensive 30-hour training courses that focus on a specific topic or method in the field of evaluation. They are a continuation of the PIFED core programme leading to the University Certification in Development Evaluation, but can also be taken as stand-alone courses.



Mixed Methods in Action: Quantitative and Qualitative Essentials for Field Evaluators

The main objective of this module is to prepare you to develop a data collection strategy, design effective data collection tools for an evaluation (interview guide, survey questionnaire), understand the challenges of data collection, and prepare useful qualitative and quantitative analyses to answer evaluation questions. It is equivalent to 30 hours of training, spread over 5 days.

Learning objectives

By the end of this module, you will be able to:

- * Choose a data collection strategy tailored to the context of each evaluation.
- * Develop quantitative and qualitative data collection tools.
- * Understand data analysis techniques for evaluation.

MODULE STRUCTURE

This module is structured around five themes.

Topic 1: Mixed data collection and analysis strategy

This theme will introduce you to the purposes and possible combinations of a mixed data collection and analysis strategy. You will also learn about the differences between random sampling and purposive sampling.

Topic 2: Implementing mixed data collection: basic tools and techniques

You will learn how to formulate questions that are appropriate for qualitative tools (interview protocols, focus groups) and surveys. You will also explore techniques for facilitating interviews and focus groups.

Topic 3: Implementing mixed data collection: field entry and participatory tools

This topic will familiarise you with the methods of entering the field in the context of an evaluation, particularly with regard to observations and surveys. Checklists will be provided to support your practice.

Topic 4: Analysing and interpreting data to answer evaluation questions

You will be introduced to different qualitative analysis techniques and explore the main quantitative analysis methods useful in evaluation.

Topic 5: Presentation and dissemination of findings to stakeholders

This session will teach you how to select and present information in a clear and relevant manner in an evaluation report, taking into account the target audience. Particular attention will be paid to the presentation of methodological limitations.

University Certification in Development Evaluation (CUED)

The specialised evaluation modules – including Mixed Methods in Action – are complementary to the core programme of the International Development Evaluation Training Programme (PIFED).

The University Certification in Development Evaluation aims to train evaluators who are competent and recognised in the international community. This university certification is awarded to individuals who have completed the PIFED core programme and three specialised evaluation modules for a total of 150 hours of training.

COURSE LEAD



Louise Picard
International Cooperation Coordinator
Organisational Services and International Cooperation Department
Vice-President, Consulting Services
louise.picard@enap.ca